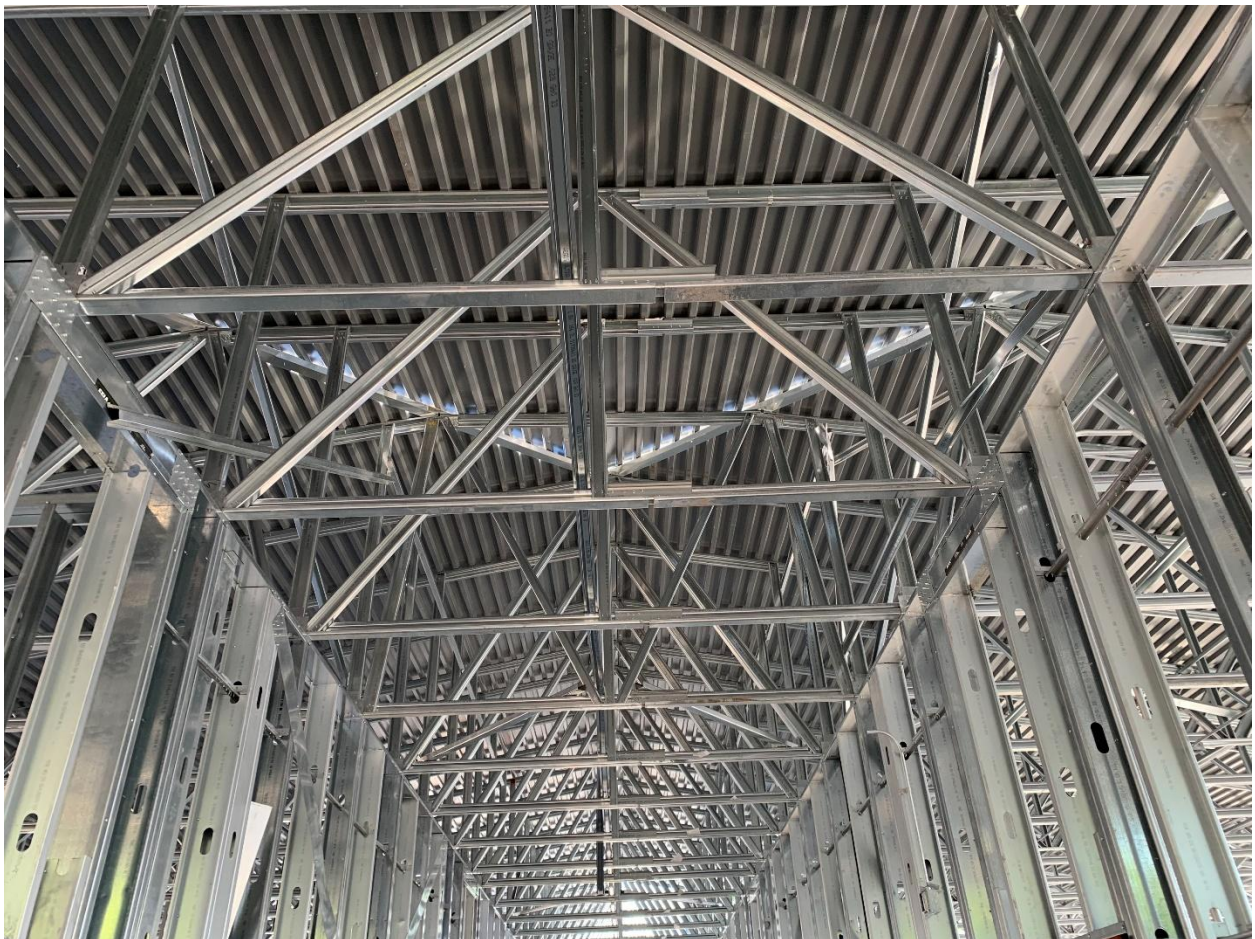


# Central Middle School

## Progress Week of May 17, 2019

Dear Colleagues,

What a difference a week makes!! This week has probably made the greatest visible difference in our project we have seen and probably the greatest difference we will see. The trusses are installed on the eighth grade wing and the first layer of roof sheets are on them.



The photo above was taken in the eighth grade hallway and if you look closely you can see the area where the slopes transition. The camera is facing north. The water on the sheets directly above the camera will flow south. Water

on the sheets north of the light line will flow east and west. That conversation will be much easier to follow after the rest of the roof sheets are installed. After the roof is completed, there should be no water making contact with the sheets in the picture.

This is  
really taking

orth. It is



Notice housekeeping continues to be exemplary.

This n  
light streal



notice the

The next picture is of the same corner from the outside.



If I had taken another step to the right the picture would be in line with the transition of the slopes. The roof is a hip roof as opposed to a gable roof. Notice the beautiful weather we've enjoyed this week which has certainly helped make good things happen.

This has been a real learning experience for me and for others on the job. I was walking through the job Wednesday and saw the piece of material you see in the center of the next picture as the workman was installing it.



The face of the wall was not square so I had no idea what that was. I had a piece of metal that was attached to the wall every ten feet on all the walls and that's what he was doing. I asked Brian Plyler and he said it is a detail he had never seen before and he assumed it acted as a brace to keep the wall from racking left and right. I was back out on Thursday and saw the supervisor for the stud crew and asked him. He agreed with Brian Plyler. It acts similar to what a diagonal brace between wood studs in a house with wood framing does.

The next picture shows the gym with the camera facing west.



The gym started looking much larger when the frame was up. The side and end walls were erected then the three heavy trusses in the center were assembled. The grey steel frame to the right of the gym is the canopy at the west entrance.

I am going to show my age here. I feel sure I sent out something this week discussing Dr. Williams and me revisiting the issue of shutting down the job for testing. When I was on the site Wednesday I had the bright idea we might be able to continue work the week of testing.

We visited classrooms on the east side of the seventh grade wing with Lola Rountree Thursday morning. We went into one classroom and could hear the work going on outside and the teacher spoke up and said that was nothing compared to the noise when they were cutting something on the gym. I feel sure what she heard was electric impact wrenches tightening bolts on the gym. She

mentioned she has three windows that will not close tightly so she has sealed them with duct tape. Issues such as this plus asbestos, leaks, mold and mildew are why we are doing this work. Our children deserved a better learning environment. I look forward to the completion.

The gym



Most of the purlins have now been installed. They seem narrowly spaced near the center of the roof but somebody felt they were necessary.

Just a note of interest, this work is being accomplished with about thirty craftsmen on the job most days.

Thank you for your interest and support. Don't hesitate to let me know if you have questions or concerns.

Ray